

You are invited to contribute to a major artwork project! Everyone and all ages welcome.

exhibitions@blackswanarts.org.uk

For the exhibition *Hear My Voice, Portraits in Cloth* May - Aug 2025

at the RWA gallery in Bristol www.rwa.org.uk with Alice Kettle <https://alicekettle.co.uk/future-events/>
Alice is making a monumental work with portraits by you to make a crowd of people. Your drawings will be embroidered by Alice to make a huge multitude.

WHAT YOU DO

- On an A5 piece of paper, draw a simple drawing of yourself or of someone you know or a group of friends or family.
- Do not include too much detail, keep it graphic. It can be an outline with simple blocks of colour.
- It can be just a head. It can be the whole person. They can be holding or wearing something important.
- It doesn't need to be a likeness, just an impression. Don't worry about doing a good drawing!
You can do as many as you want!

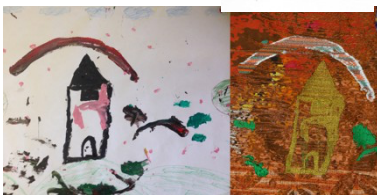
NEXT

- Take a photo of the drawing.
- If you chose write your first name on the work (do not include your full name)
- Send to this address: exhibitions@blackswanarts.org.uk

WHAT WILL ALICE DO WITH YOUR DRAWING?

- Alice will scan your drawing and stitch a reproduction onto the artwork.
- She may change some of the details and colours or use it more than once.
- Your drawings will be included on a screen next to the textile artwork in the exhibition.

Examples
of drawings
that Alice
will stitch.



Here is an example of a previous project with many refugees' contributions, called *Thread Bearing Witness* www.threadbearingwitness.co.uk
The whole work (below) is 8m wide with many drawings that are stitched.
You can see on the left a drawing and how it has been stitched by Alice.



Alice will have a pop-up drawing table at Frome Museum 10-12pm on Sunday 4th August 2024.

Photo: top line to bottom: Alice Kettle, Sue Partridge, Joe Low, Michael Pollard.

