

In-Person Sessions at AccessArt Lab, Stapleford Granary

In 2025 AccessArt is offering in-person sessions at the [AccessArt Lab](#) at Stapleford Granary, Cambridgeshire CB22 5BP.

The In-Person Sessions will be open to various audiences. Find out more about these sessions below.

To make sure you are kept up to date when we announce new in-person, open sessions, please complete the form [here](#).

You can also:

- [Join the AccessArt Network Facebook Group](#)
- [Follow us on Instagram](#)

In-Person Sessions for artists & Teachers



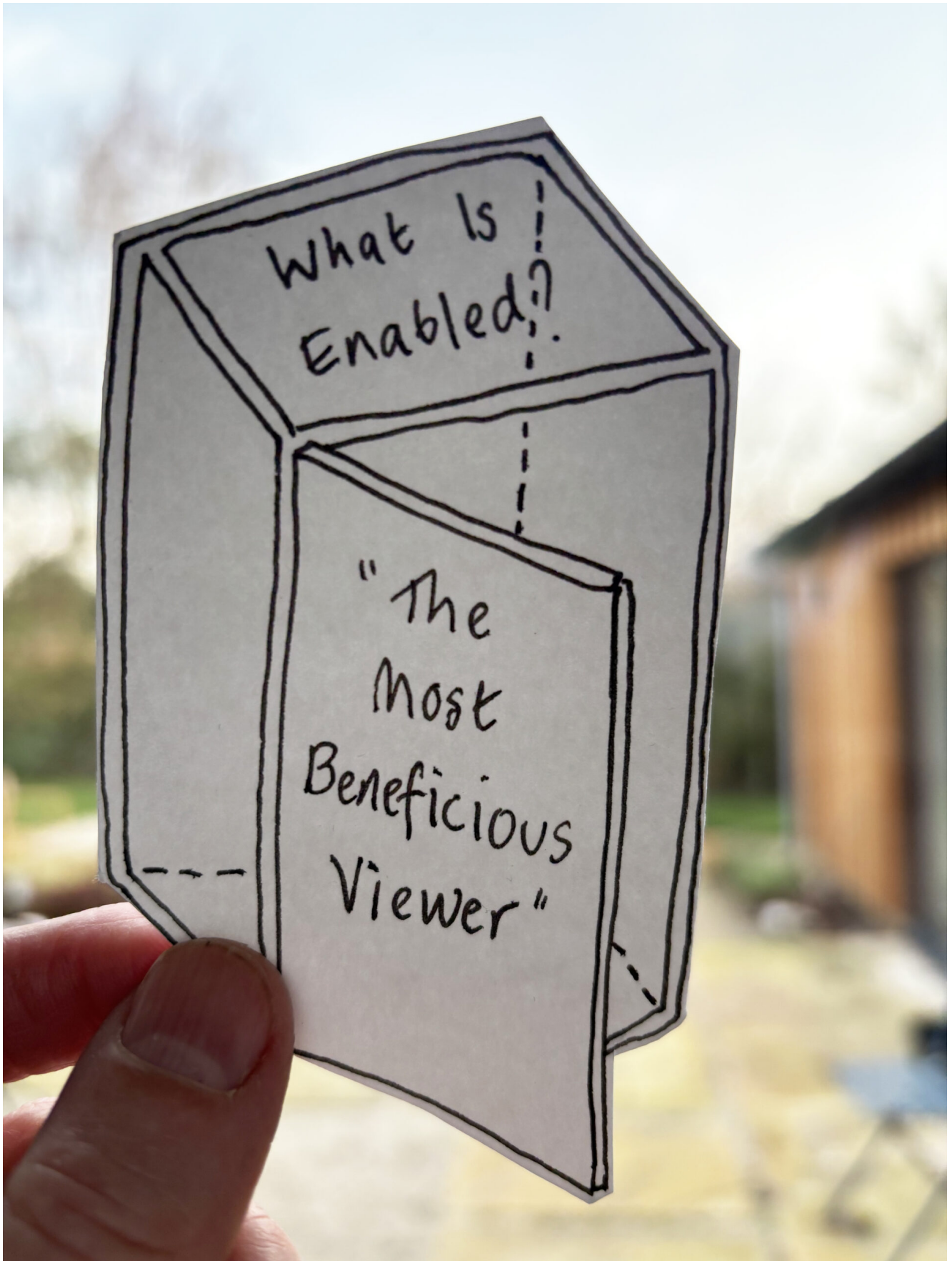
Workshops for Artists and Teachers (all settings, all backgrounds)

Sessions in the “Artists & Teachers Exploring Together” Series:

Engaging Audiences Through Transportation: 26th April

Welcoming Flow in Making: 17th May

Further Dates Coming Soon



Artists and Teachers Exploring Together

The 'Artists and Teachers Exploring Together' series of in-person workshops at Stapleford Granary, Cambridgeshire, provides an opportunity for a diverse audience of workshop participants to come together and explore pedagogy through making.

AccessArt is devising, creating and testing content for the AccessArt website. As part of this process, we are inviting participants to attend regular or one-off sessions to help us brainstorm, explore and reflect. Our ultimate aim is to create content for the AccessArt website to support all ages and in particular, teenagers. To work towards this aim, we would like to bring together a workshop audience who support the [broader aims and values of the AccessArt Lab.](#)

Workshop Format:

The workshops will focus on key areas of visual arts pedagogy identified by AccessArt. As a group, we will explore these areas of focus, loosely guided by the AccessArt team. Making, and in particular collaborative making, will be central to our process; we will use making as a way to access and share our thoughts (whilst our hands are busy our hearts and brains can connect!).

The workshops will be about journey and exploration, rather than outcome. The areas of focus will be purposely held lightly to allow for

space for unexpected outcomes to emerge.

Rather than deliver the sessions in a top down manner, where we share our skills and expertise, AccessArt will be providing the space and intention, and facilitating shared discovery.

Audience:

We welcome a wide audience to the sessions. As the title of the series suggests, the sessions are designed for artists and teachers, although these terms are used very loosely. Please come along if you have an interest in how we can enable creativity in others.

You might be a teacher working in any setting, from EYFS to Sixth Form, or an educator working in FE, HE or community education.

You might be an artist of any discipline, starting in that role or you might be more established.

Attendees should feel comfortable (or at least interested in!) taking creative risks.

All we ask is that you come with a sense of curiosity, openness, and willingness to share. We hope the sessions allow relationships to form as we share our own experience, and reflect upon how our experiences are transferable between settings. The workshops should be stimulating for all

concerned.

Booking:

All workshop places should be booked in advance through the booking links provided.

A £10 per session charge will help us cover materials and studio hire. We also ask that attendees are paid [members of AccessArt](#) (if you are not already a member you can join for just £3.50 per month), as a way to ensure that you understand and support the ethos of AccessArt.

Purpose and Permission:

By taking part in the workshops, you understand that you are contributing to the creation of a wider, shared pot of knowledge and inspiration, which we will share via the AccessArt website and other sources. To this end, attendees will sign a permission form to grant permission for your hands and the things you make to be photographed and filmed / and or your face and voice (your choice).

Please do let us know if you have any access needs. You can find out more about the [studio location here](#) (though all enquiries should be made via [AccessArt](#)).

Artists & Teachers Exploring Together



**Saturday 26th April
10.00am – 1.00pm (In person)**

[Book Now](#)

The location is accessible via public transport, and there is easy parking on site. You can find full details about how to get to the [AccessArt Lab at Stapleford Granary here](#)

[Engaging Audiences Through Transportation](#)

**Saturday 26th April
10.00am – 1.00pm (In person)
£10 for [AccessArt Members](#)**

Aimed at: Teachers from all settings, Educators,

Artists

This in-person session, run by AccessArt at the AccessArt Lab, Stapleford Granary Cambridgeshire is part of the 'Artists and Teachers Exploring Together' series. Please see the information above about this workshop series so that you understand the nature of this workshop before you book.

The Engaging Audiences Through Transportation workshop will explore how we can use elements of surprise, novelty, and performance to engage audiences. As a group, we will explore how we can, as facilitators, create scenes, environments or possibilities which temporarily transport learners to new places or ways of being, to free imaginations and enable permission to make and act. We will explore questions such as: How can we set up our spaces so that they open up new ways of thinking in learners? How can we entice learners to act playfully and to test out new versions of themselves by becoming new versions of ourselves as facilitators?

This practical making session will take creative risks in its format, but we are excited to see how these ideas might transfer to a variety of settings and inspire practice.

In this session we aim to explore together, to share our experiences and observations. The session will be documented (as described above) with the intended aim to repackage and reshare our

experiences via the AccessArt website to a wider audience.

We welcome a diverse and inclusive audience to the sessions, whatever your experience. Please come along if you have an interest in how we can enable creativity in others. You might be a teacher working in any setting, from EYFS to Sixth Form, or an educator working in FE, HE or community education. You might be an artist of any discipline, just starting out in that role or you may be more established. Attendees should feel comfortable (or at least interested in!) taking creative risks.

All we ask is that you come with a sense of curiosity, openness, and willingness to share. We hope the session allows relationships to form as we share our own experiences, and reflect upon how our experiences are transferable between settings. The workshop should be stimulating for all concerned.

Materials will be provided. Please wear suitable clothes. Refreshments are available to buy onsite. Please let us know in advance if you have any access requirements.

[Book Now](#)

Artists & Teachers Exploring Together



Saturday 17th May
10.00am – 1.00pm (In person)

[Book Now](#)

The location is accessible via public transport, and there is easy parking on site. You can find full details about how to get to the [AccessArt Lab at Stapleford Granary here](#)

[Welcoming Flow in Making](#)

Saturday 17th May

10.00am – 1.00pm (In person)

£10 for [AccessArt Members](#)

Aimed at: Teachers from all settings, Educators, Artists

This in-person session run by AccessArt at the AccessArt Lab, Stapleford Granary Cambridgeshire is part of the Artists and Teachers Exploring Together series. Please see the information above about this workshop series so that you understand the nature of this workshop before you book.

The Welcoming Flow in Making workshop is all about helping us achieve a state of flow when making with our hands. Through handling materials, working small, and responding intuitively to what happens in front of us, we will tune in to experiencing what it feels like when we are in the present, and working with our senses. Alongside this exploration, we will become aware of the voice inside our heads which attempt to stop or sabotage us, blocking our creativity. By listening to and acknowledging the voices which try to stop

us, we'll understand more about how common and universal these voices are, and how we can quieten them.

This session will be gentle and exploratory, and will use shared discovery and momentum to move participants forward. The aim is that the experience helps participants better understand what it feels like to be in this kind of creative flow state, to experience the benefits, and then to explore how these states and benefits can be passed on to our various audiences.

The aim of this session is to explore together, and to share our experience and observations. The session will be documented (as described above) with the intended aim to repackage and reshare our experiences via the AccessArt website to a wider audience.

We welcome a diverse and inclusive audience to the sessions, whatever your experience. Please come along if you have an interest in how we can enable creativity in others. You might be a teacher working in any setting, from EYFS to Sixth Form, or an educator working in FE, HE or community education. You might be an artist of any discipline just starting out in that role or you may be more established. Attendees should feel comfortable (or at least interested in!) taking creative risks.

All we ask is that you come with a sense of

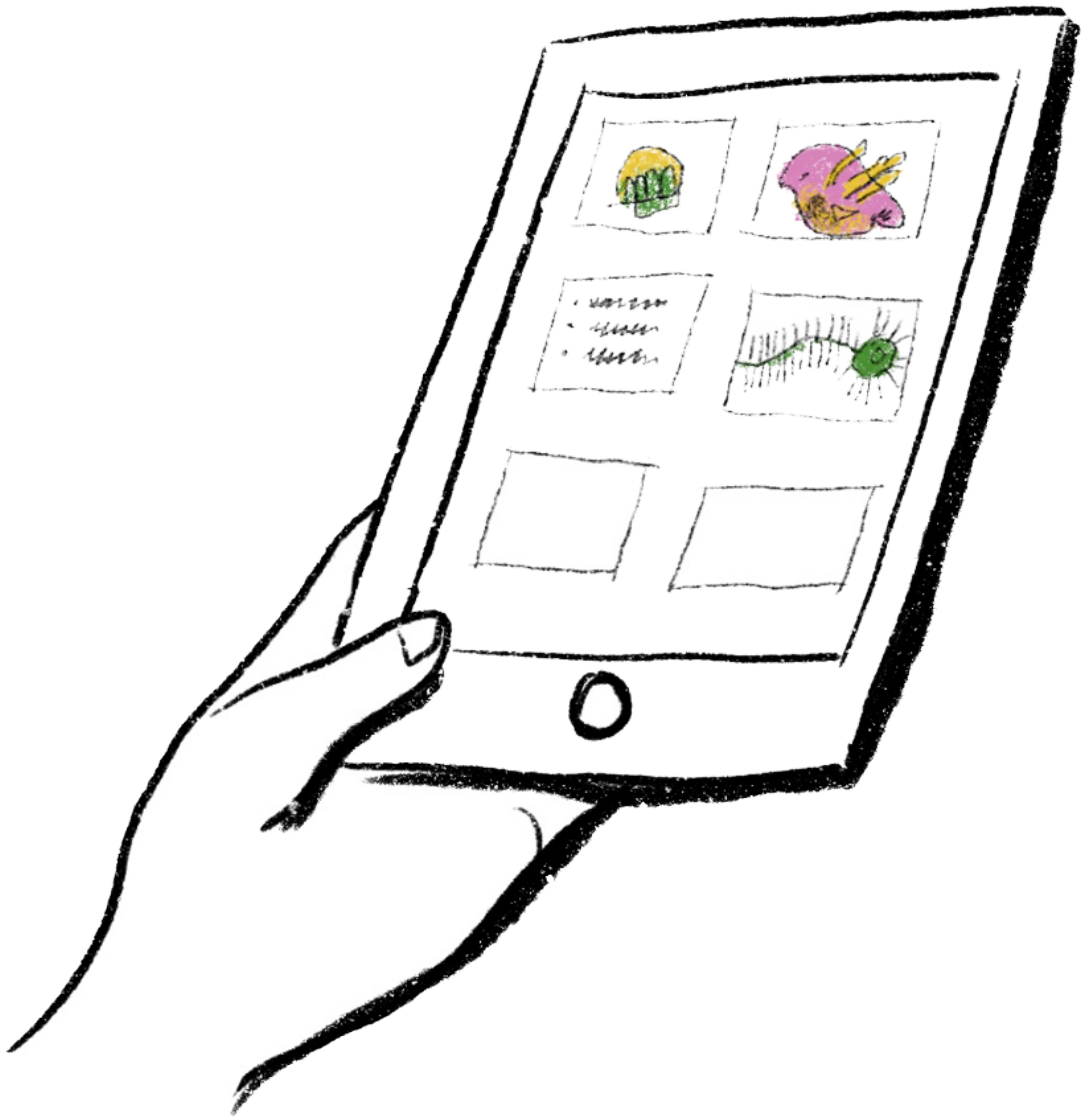
curiosity, openness, and willingness to share. We hope the session allows relationships to form as we share our own experiences, and reflect upon how our experiences are transferable between settings. The workshop should be stimulating for all concerned.

Materials will be provided. Please wear suitable clothes. Refreshments are available to buy onsite. Please let us know in advance if you have any access requirements.

[Book Now](#)

Other Ways To Access CPD...

Zoom CPD



CPD Library



Collaborative Sessions



Artist Educator Network

