

Home: The Little House on West Street LockDown Project

By [Paula Briggs](#) & [Rowan Briggs Smith](#)

This post shares the progress of a family project undertaken during Lockdown 2020.



Scale Model. What Makes Home?

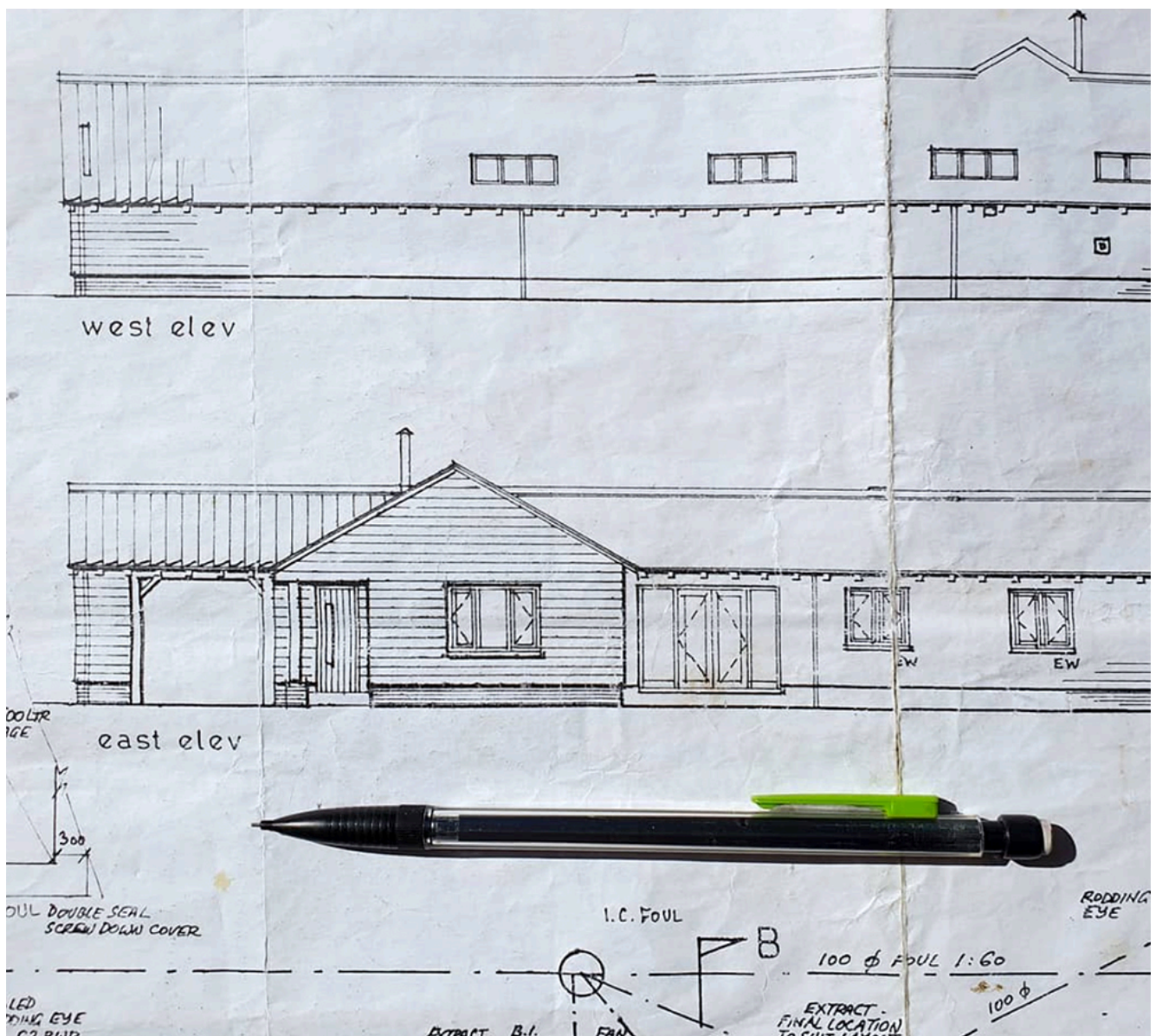
If you are one of the lucky ones, (and we know we are very lucky), then lockdown provides the opportunity to shrink down the world a little bit into something more manageable and controllable. It also provides the opportunity, again if you are lucky, to enjoy being home.

Making things has for us as a family always been a way to calm the body and occupy the mind. There is something so elemental about taking a material, shaping it with your hands, and making something new. And while the hands are busy, and the mind is challenged with problem solving, the body can relax.

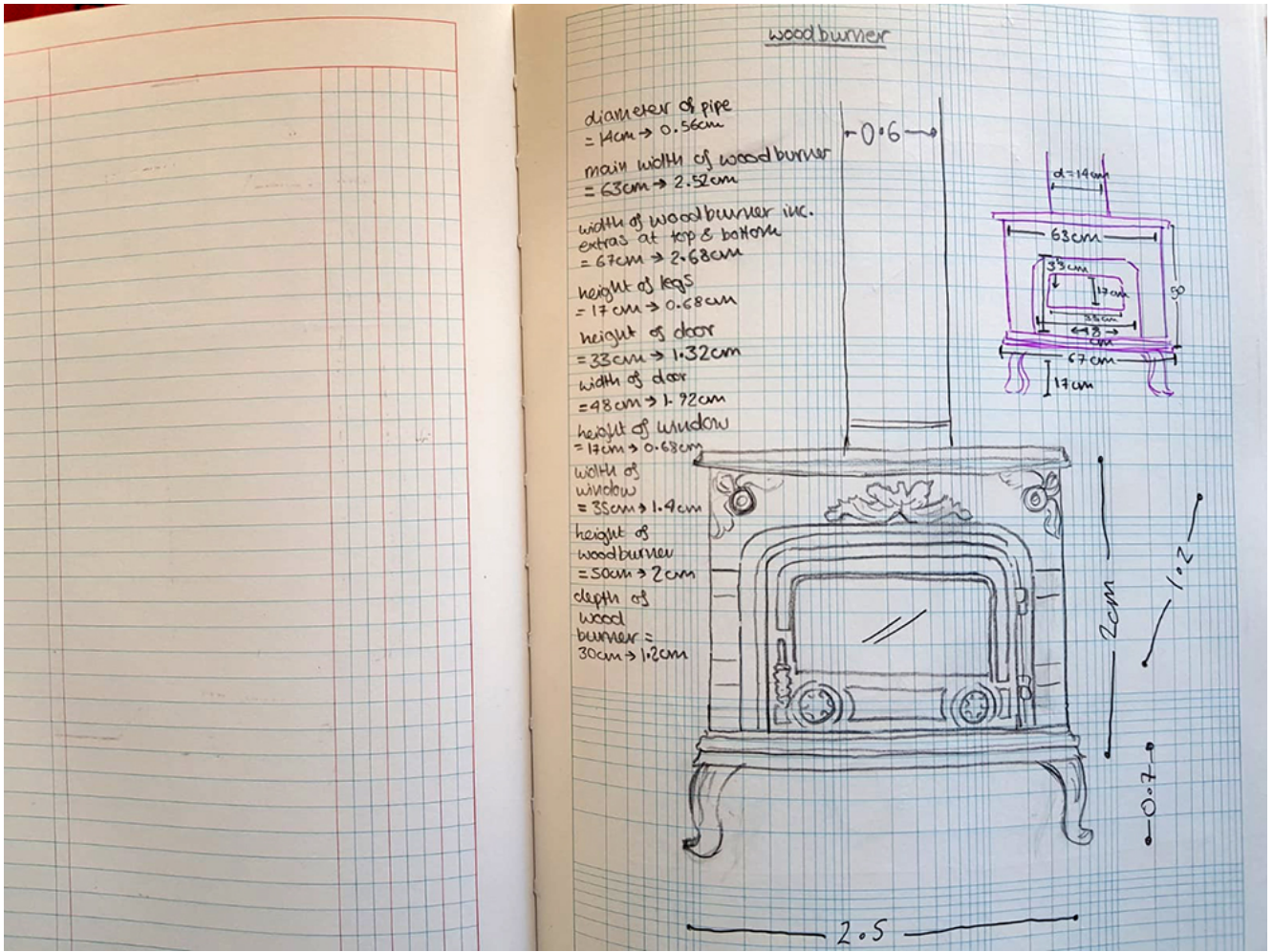
Given that we were to spend the vast majority of our time in our home, for who knows how long, we decided we needed a making project to bring us together for a part of each day, and to occupy our head and hands. Given also that we were to spend most of our time within the walls of our house, we decided to really study those walls; to measure, to plot, to understand and appreciate those walls. How did they fit together? What was the relationship of parts? What are the "essential" items of our home? What do we love? Which spaces do we most enjoy? What makes this our home?

And so the idea for our scale model of home and garden came about on Day 5 of lockdown. We hope you enjoy watching its progress on Instagram at [LittleHouseOnWestStreet](https://www.instagram.com/LittleHouseOnWestStreet).

And a big thank you to all those delivery drivers who have fed us with plywood and balsa wood and sandpaper and wood filler, whilst we squirrel ourselves away making our version of our home. And to all those people who are working so hard during lockdown to help make things right, and who cannot stay home surrounded by the people and things they love, thank you.



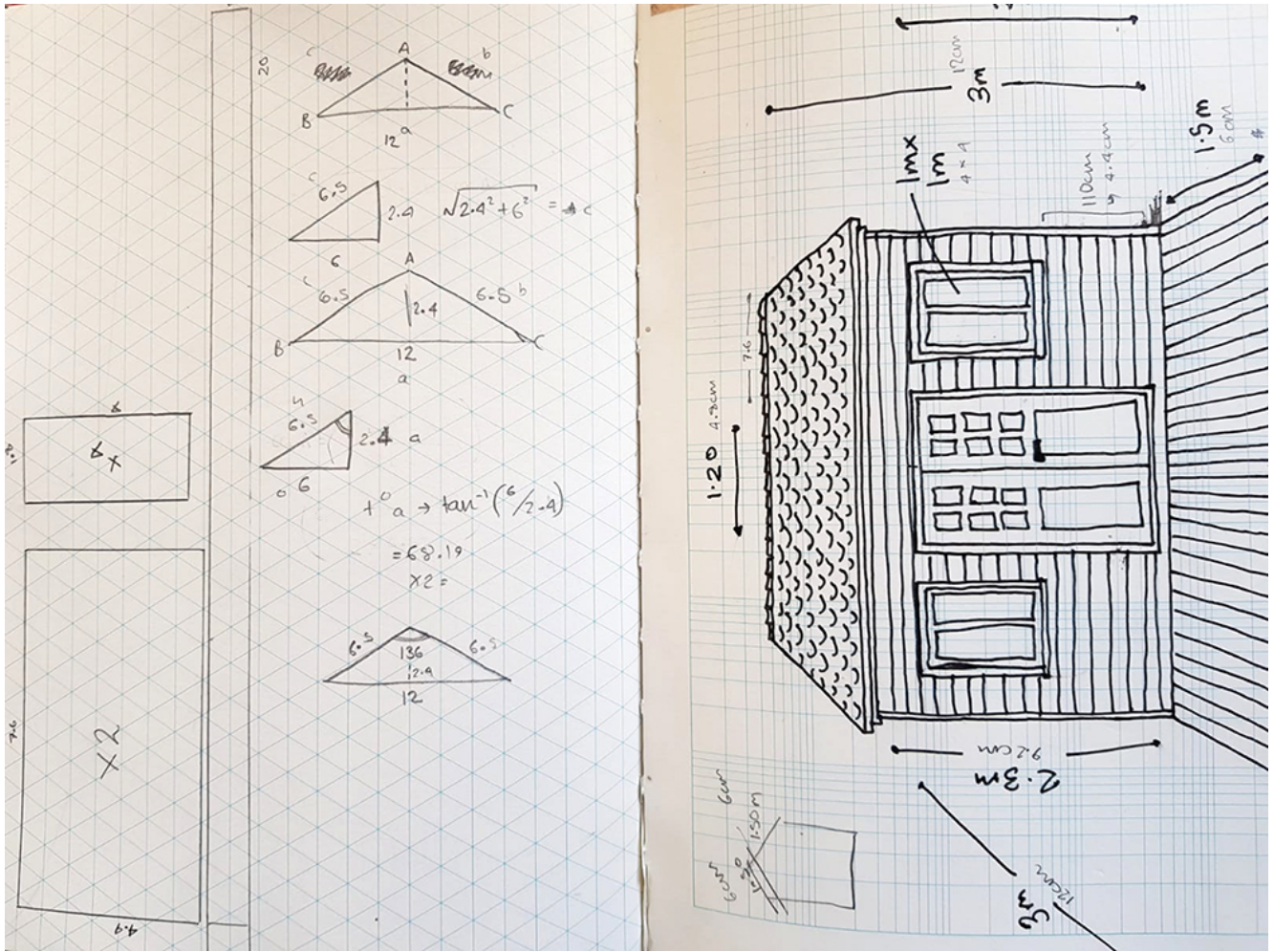
Plan Drawings



Figuring out the scale. Finally settled on 1:25



Lead wood burner (3cm)



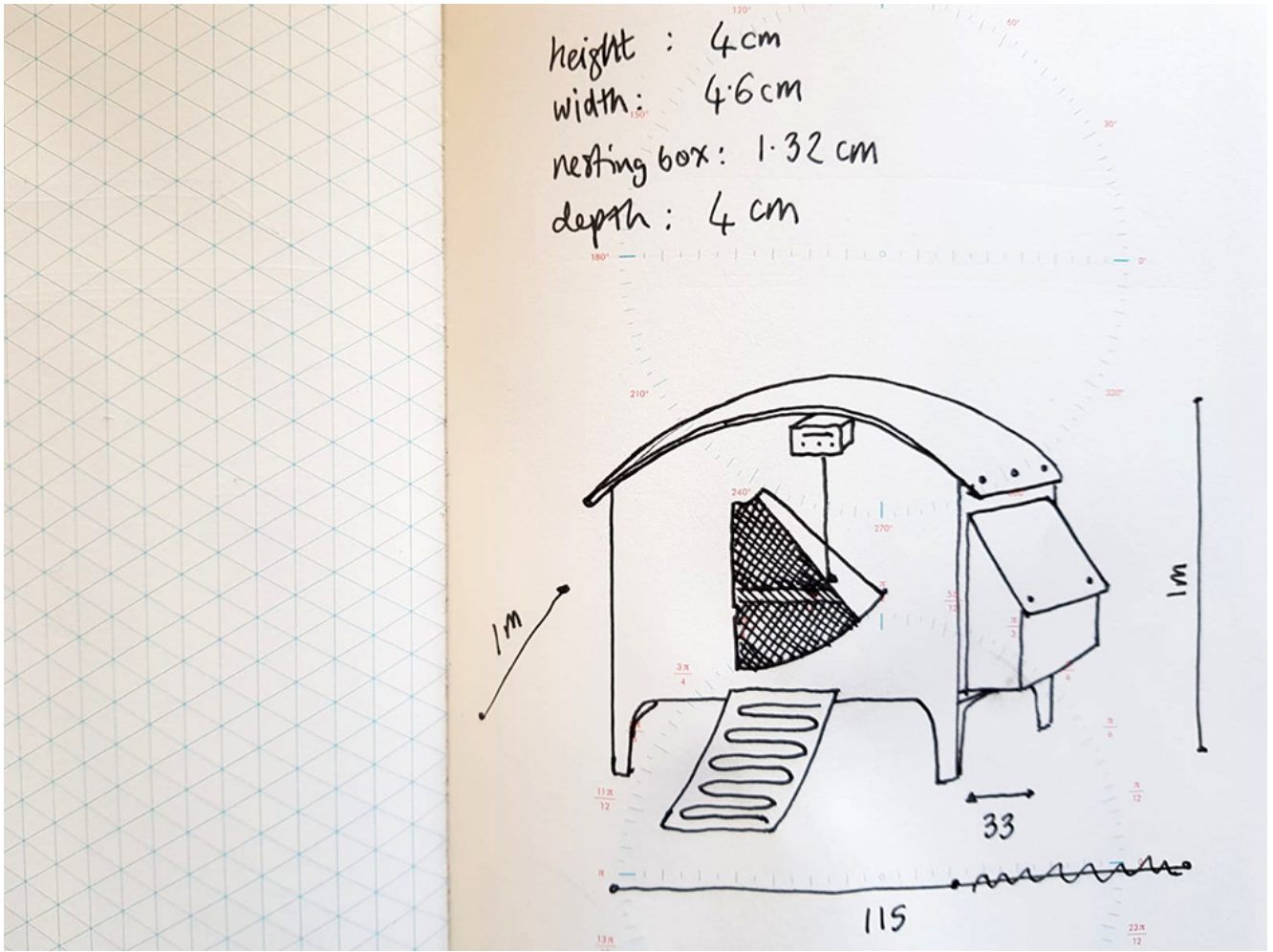
Measuring and scaling the summer house where the model is being built



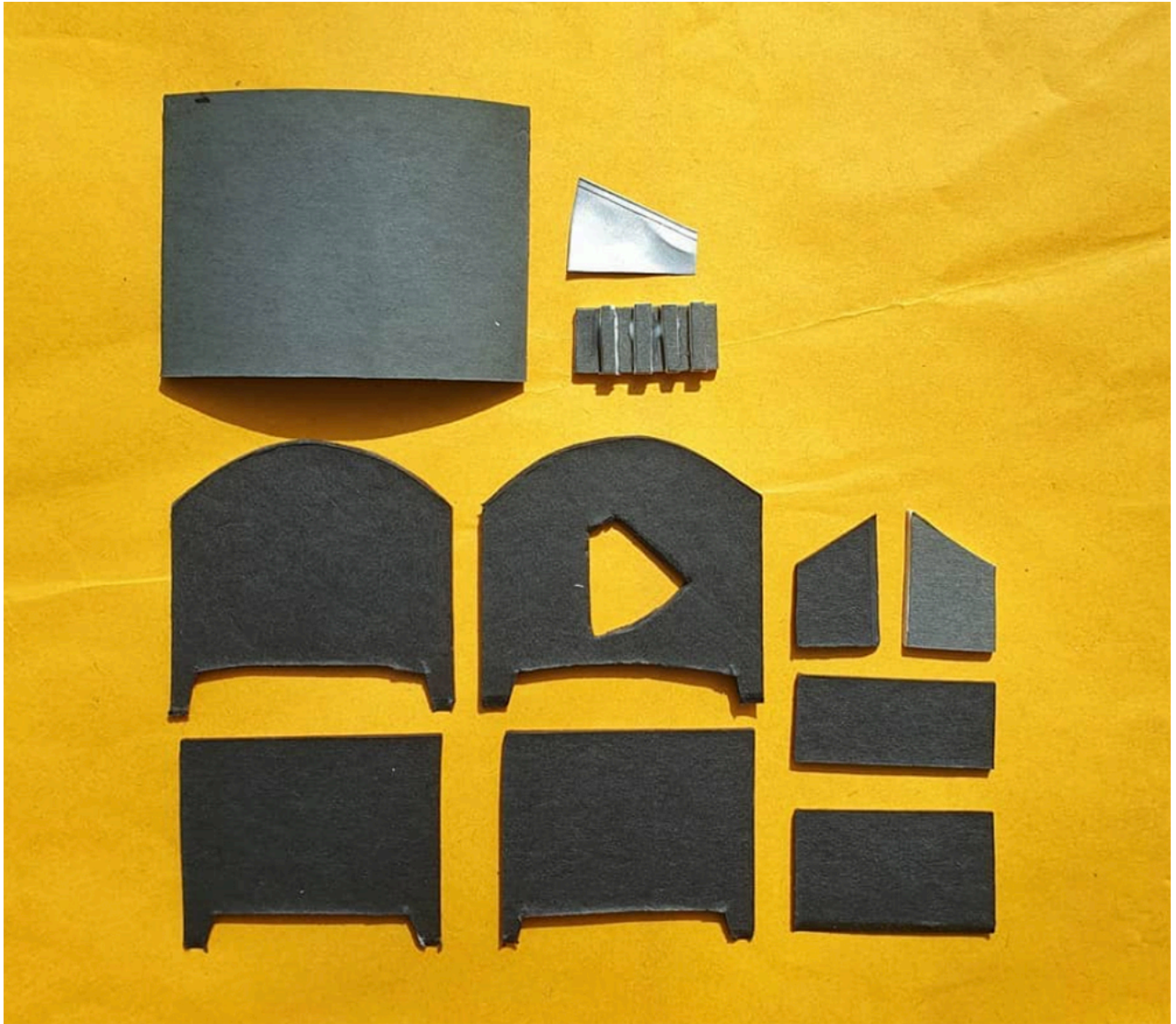
Summer House (20 cm long): Plywood, coffee stirrer, balsa wood, roofing felt



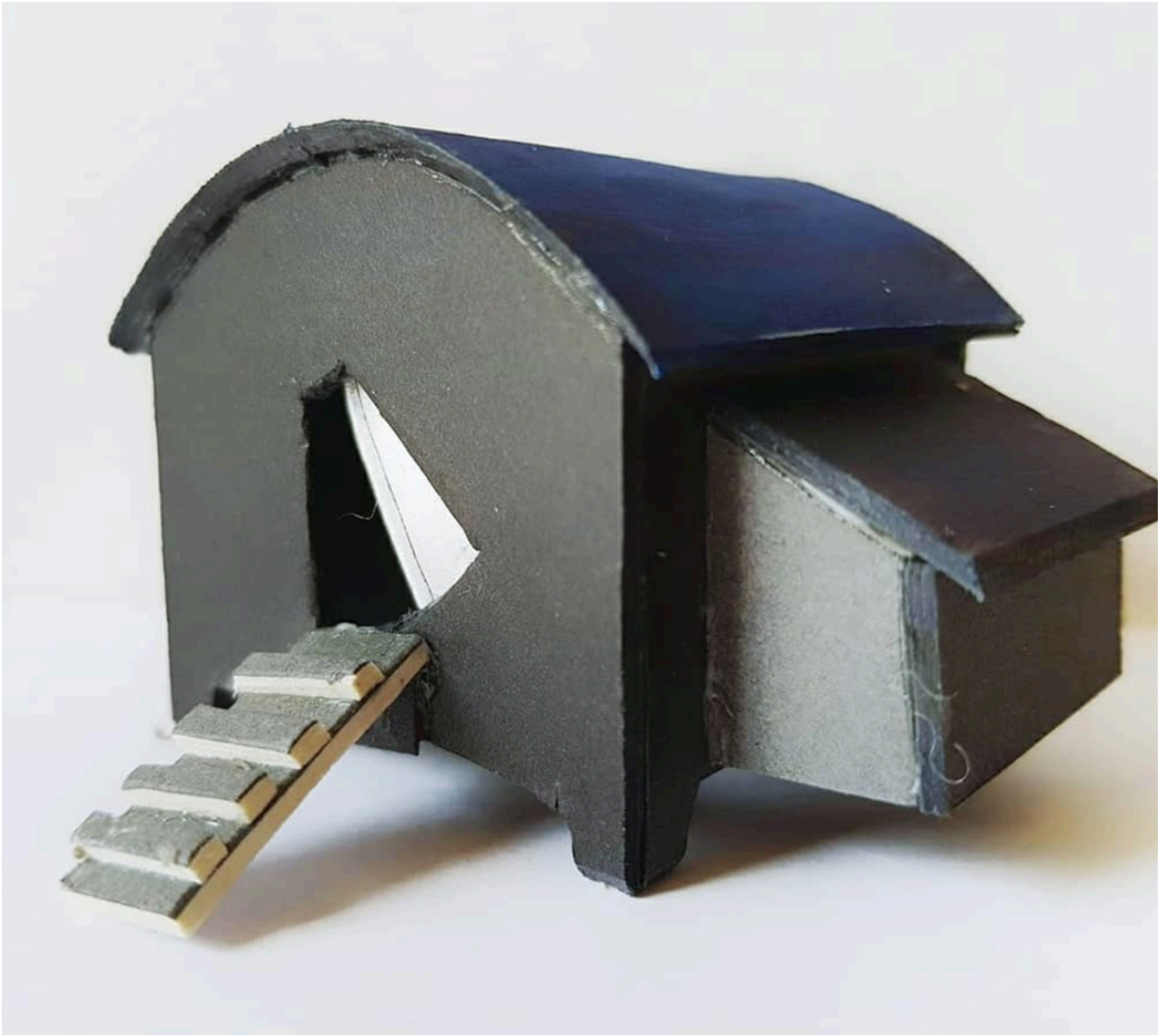
Inside the summer house, model of the work table containing super small model of the model



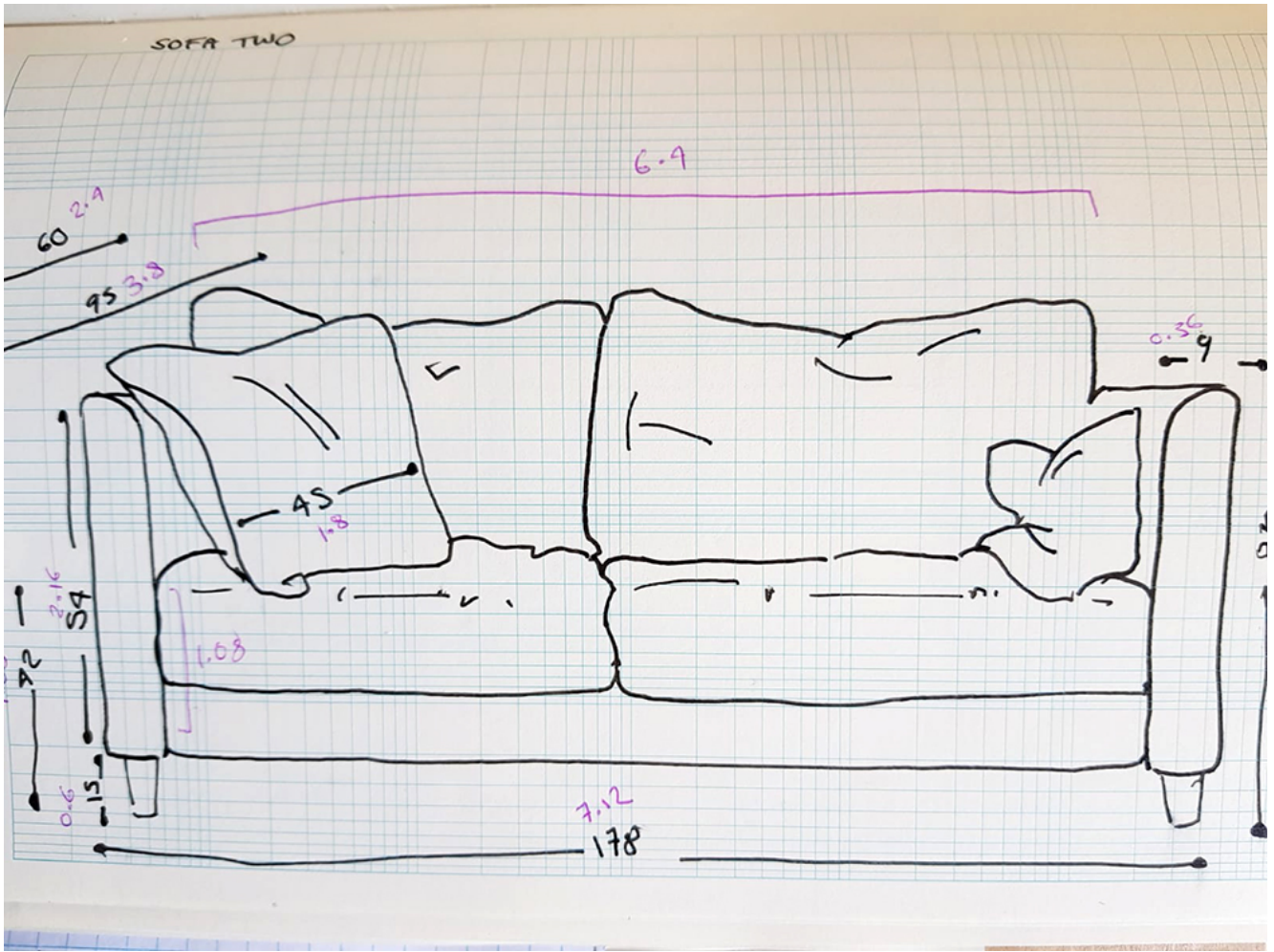
Plan of hen house



Parts for hen house (cardboard)



Scaled down hen house (5cm)



Drawing of Sofa



Sofa: Balsa wood, 5cm



Small balsa wood sofa



Coffee table



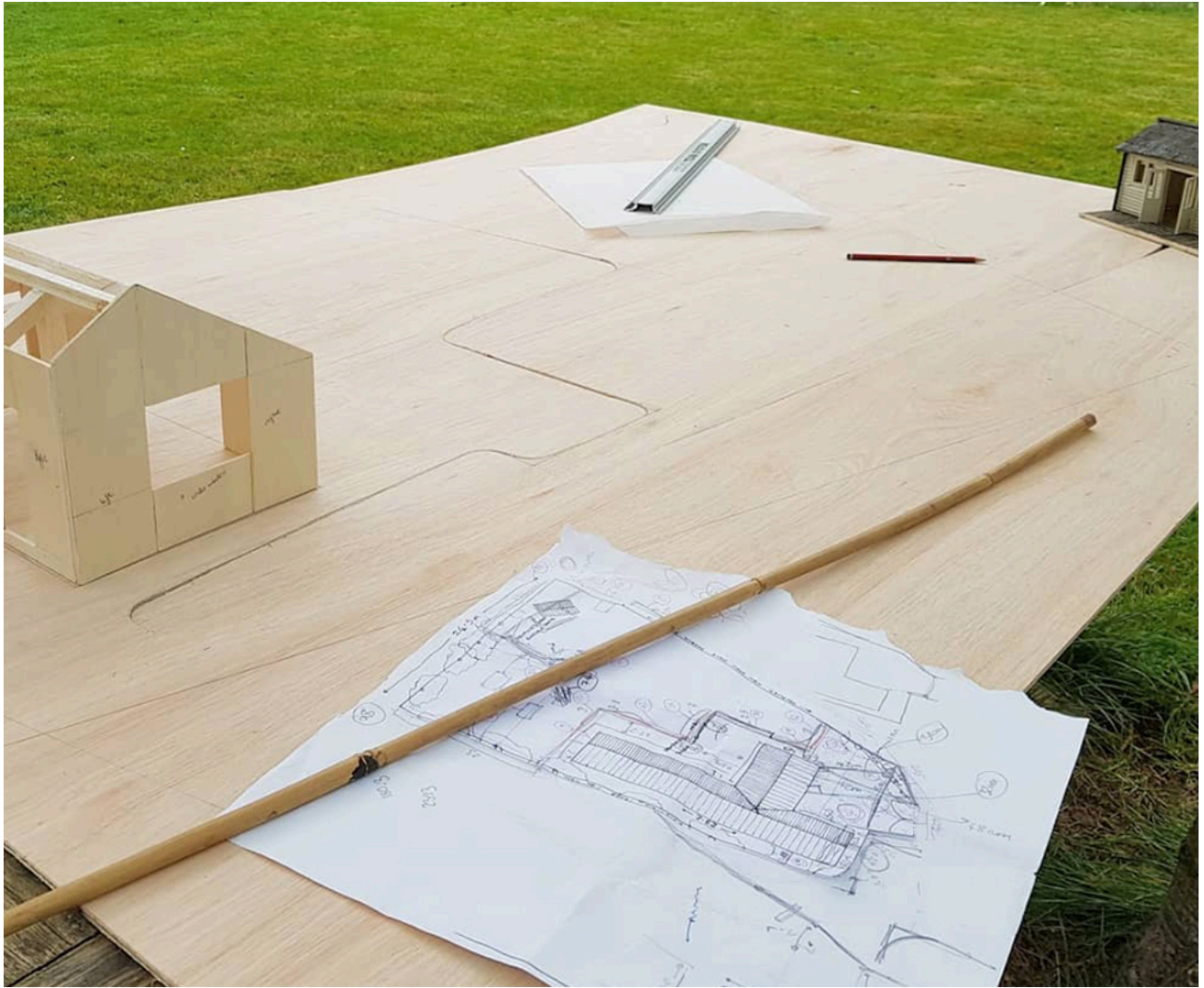
Dresser



Chair



Measuring a plywood base



Creating sections to jigsaw to make the plywood base more manageable



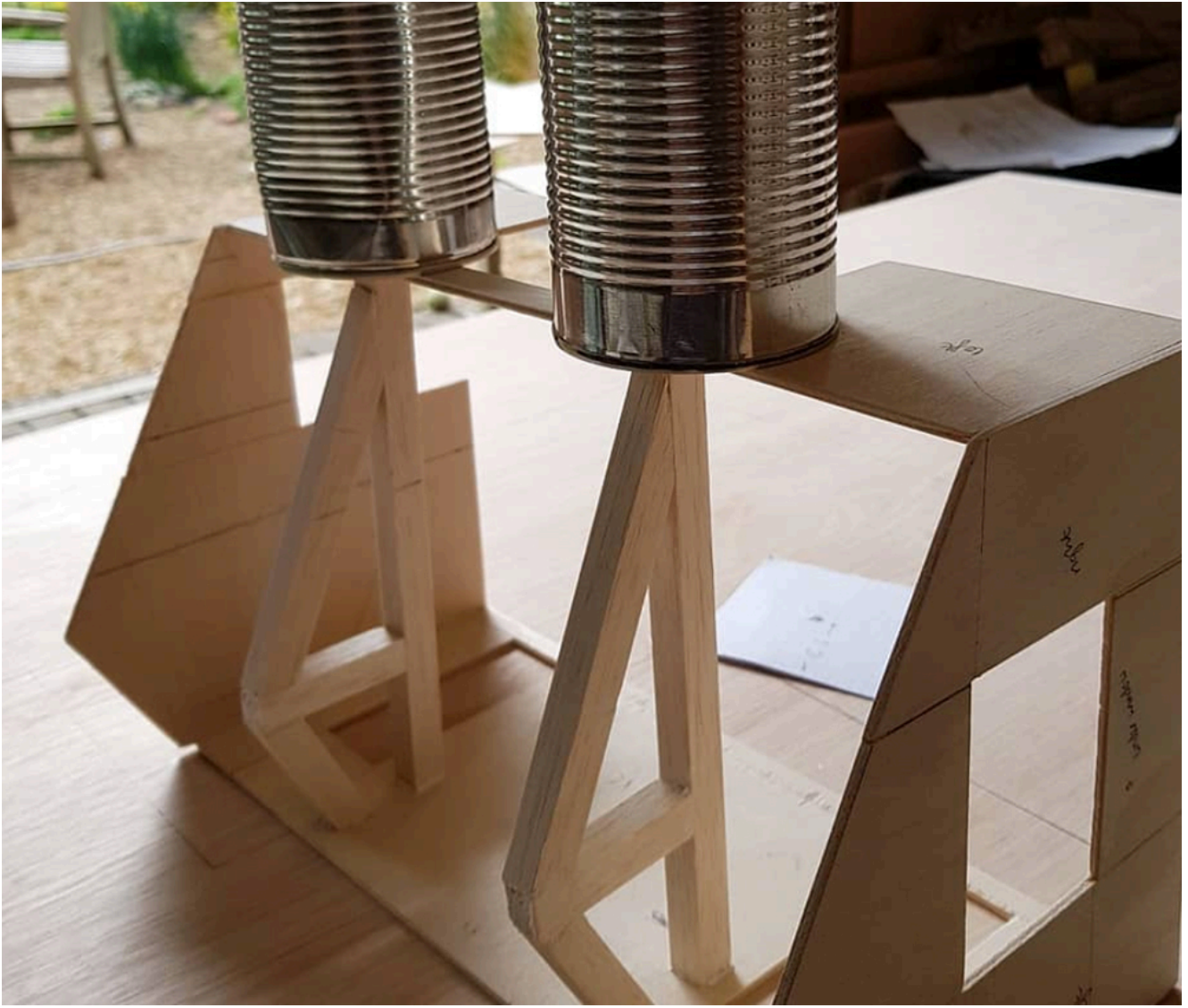
Jigsaw lines and base for trees



Adding trees for structure



Building a section of the house (plywood)



Adding roof beams (balsa wood)



Windows and interior walls



We decided to switch grass for gold leaf. We all need cheering along and we like the idea that "there is gold everywhere if you look for it"



To Be Continued!

[Please share your #lockdown projects with us](#)

This is a sample of a resource created by UK Charity AccessArt. We have over 1500

resources to help develop and inspire your creative thinking, practice and teaching.

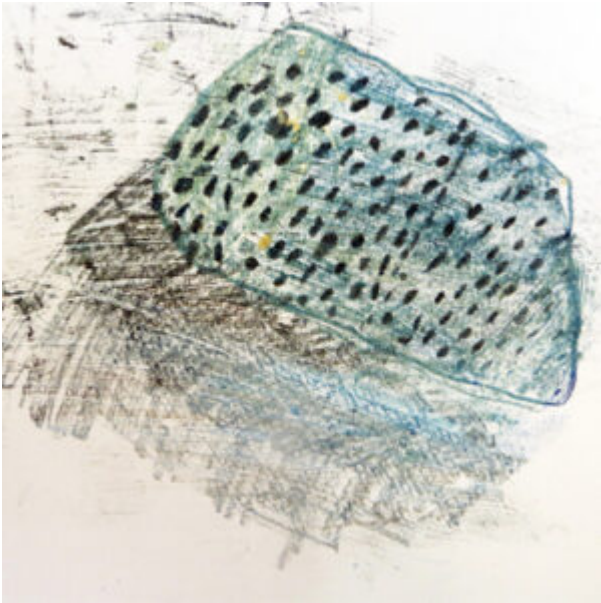
AccessArt welcomes artists, educators, teachers and parents both in the UK and overseas.

We believe everyone has the right to be creative and by working together and sharing ideas we can enable everyone to reach their creative potential.

Drawing Small

You May Also Like...

Pathway: Exploring the world through mono print



[This is featured in the 'Exploring The World Through Mono print' pathway](#)

Drawing Large



Inspire 2020: Introducing Colour and Egg Tempera on a Gesso Panel

This post shares how egg tempera was used as a medium in the Italian Renaissance and how teachers interpreted the processes involved in the teaching studio at the Fitzwilliam Museum, Cambridge with AccessArt and the Fitzwilliam Education Team, as part of the CPD programme for Inspire 2020

Ofsted are Coming Tomorrow!

Sue Brown shares her experience of an Ofsted inspection with an Art Deep Dive.

Walking and Drawing

Cupid and Psyche: How a Fifteenth-Century Renaissance

Panel Became the Most Loved Painting in Cambridgeshire

Sheila Ceccarelli tells the story of how Cupid and Psyche, painted by Jacopo Del Sellaio, an Italian Renaissance artist, came to become the most loved painting in Cambridgeshire. Inspire is an exhibition of art made by primary school children and celebrates the creativity of our local schools. It champions the on-going importance of cultural learning and the visual arts for children and young people. A chance also to see Del Sellaio's Cupid and Psyche on display next to the children's work.

The Story of Cupid and Psyche by Jacopo del Sellaio (1442 – 1493)

In this post, Kate Noble, Education Officer at the Fitzwilliam Museum, Cambridge shares the story of Cupid and Psyche as depicted in the 15th Century painting by Jacopo Del Sellaio. This is one of a series of posts from Inspire: A Celebration of Children's Art at the Fitzwilliam Museum, Cambridge.

Exploring Black & White Film Photography

AccessArt Young Artist Mitch shares his passion and process in analogue photography.

Inspire 2020: Teachers

This post is based on CPD (Continued Professional Development) sessions in February and March 2019, hosted and delivered by the Fitzwilliam Museum, Cambridge in collaboration with AccessArt, for Cambridgeshire teachers participating in Inspire 2020 Project.

Making A Creative Response – Physical to Aural

As part of the teenage #BeACreativeProducer Project, we have been exploring how we can trust and use “instinct” in relation to finding starting points to generate ideas and enable creativity. In this post, AccessArt Young Artist Alex Tunstall shares what happened when he received a “box” of physical stimuli to inspire an aural response.

Drawing in the Dark: Developing a Visual Language

Spotting Potential and Nurturing a Young Talent

You May Also Like...

**Visual Arts Planning Collections:
Portraits**



Assessment & Progression



Taking on the Inktober Challenge

Artist Morag Thompson Merriman taking on the Inktober Challenge and generously shares her process with AccessArt.

Three Approaches to Drawing

Melissa Pierce Murray proposes three approaches to challenge habitual ways of drawing by expanding the repertoire of marks and approaches.

Modelling The Head in Clay – by Melissa Pierce Murray

Use Scrapstores!

Modelling the Head in Clay Part 4 – Features

This is the final post in a series of posts following teenagers modelling a clay head over a term with artist Melissa Pierce Murray. In the final session of the series: Modelling the Head in Clay, we look at how to form the features: eyes, ears, mouth. We look at ways to finish and embellish the form using hair, clothing or inventing horns. In the class we talked about how the muscles attach to the bones, and how the skin smoothes over the surfaces.

Modelling the Head in Clay Part 3 – Skull

This is the third post in a series of posts we concentrated on creating a solid armature and clay foundation for our clay

heads. In this post This post is the third in a series of posts following teenagers making a clay head over the course of a term with artist Melissa Pierce Murray. Here they concentrate on developing the shape of the cranium and forehead, the structure of the eye sockets, cheekbones, jaws and teeth.

Modelling the Head in Clay Part 2 – Preparations

This post looks at two preparations for making a clay head: drawing to help us learn to see the form in the round, and taking measurements from life.

This is the second post in a series of resources showing how teenagers modelled a clay head over the course of a term.

Modelling the Head in Clay Part 1 – Armature

Making a Steel or Wood Armature is the first in a series of resources showing how teenagers modelled a clay head over the course of a term.