

The AccessArt Lab



Welcome to the AccessArt Lab

AccessArt has opened an [AccessArt Lab](#) as part of our continuing commitment to push the boundaries of what is possible when artists and educators from all settings work together. Led by [Paula Briggs](#), Creative Director of AccessArt and the AccessArt Lab, the studio at Stapleford Granary, Cambridge, will provide a space for an ongoing creative (and practical) conversation between AccessArt and our audience. [Read More](#)

The AccessArt Lab: Areas of Focus and Core Values

The AccessArt Lab provides AccessArt with the opportunity to focus on practical and pedagogical exploration of key areas of interest which have emerged over the last few years.

The work in the Lab will be guided by specific areas of focus and core values. [Read More](#)





The AccessArt Lab: Workshop Sessions

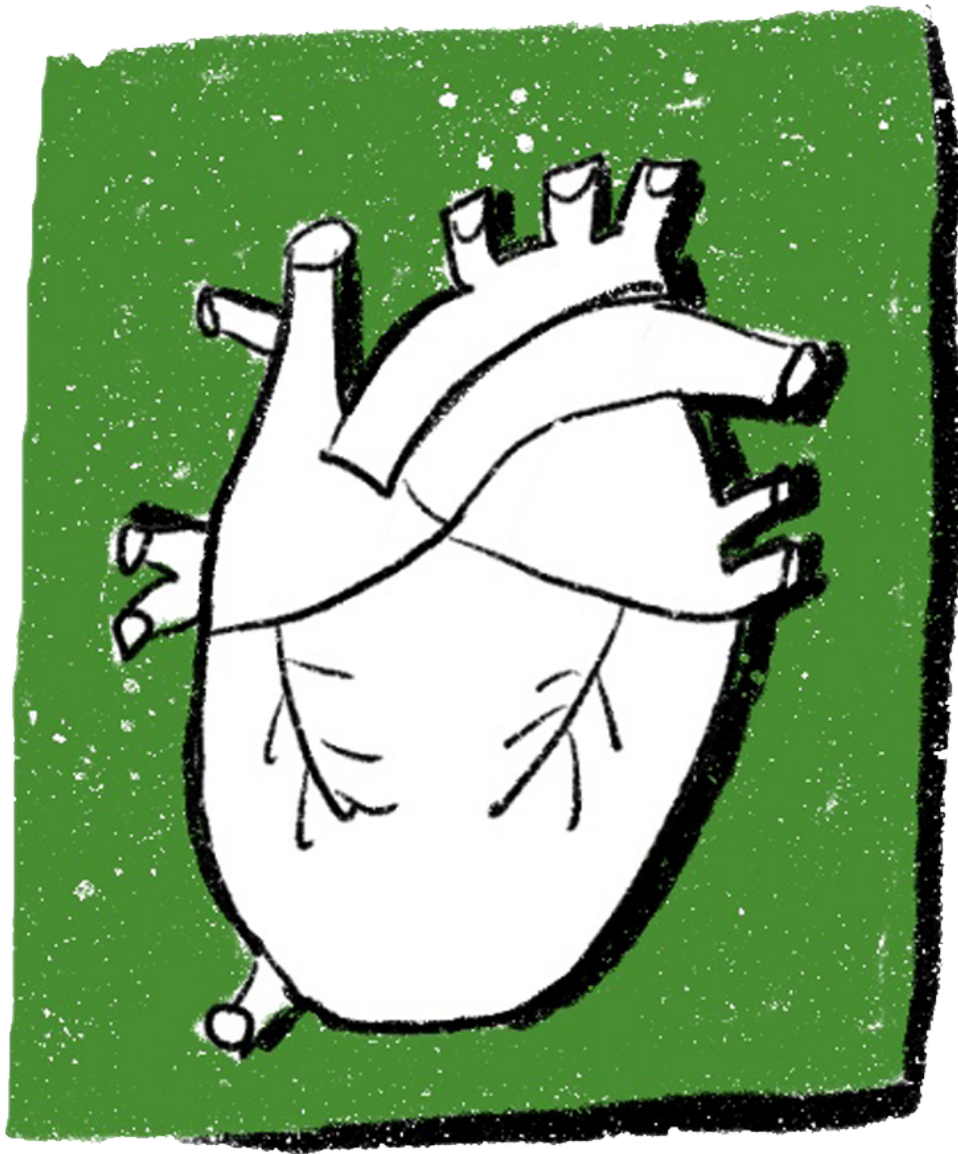
The AccessArt team will use the AccessArt Lab to devise, trial and develop content for the AccessArt website. As part of this process, we will be running in-person workshops at the studio at Stapleford Granary, Cambridgeshire.

[Read More](#)

In-Person Workshop Sessions

We have started to announce our in-person sessions aimed at teachers (all settings), artists, artist educators and teenagers!

[Read More](#)





Whilst the outcomes of the AccessArt Lab will be shared via AccessArt, Paula Briggs will also be sharing her own personal thoughts and observations about how we enable the creative process through nurturing a safe and exploratory space via [The Everyday School of Art](#) on Substack.

To make sure you are kept up to date with all the AccessArt Lab news, please:

- [Register for free at AccessArt](#) if you are not already a free subscriber or member
- [Join the AccessArt Network Facebook Group](#)
- [Follow us on Instagram](#)

The AccessArt Lab will begin in January 2025. Please join the [AccessArt Network Facebook](#) group and register at [AccessArt](#) for free to be kept in touch.

[Stapleford Granary](#) is an Arts Centre whose aim is to foster cultural understanding through education.

The venue offers music, art, education & conversation in a beautiful 19th century farm complex, situated at the foot of the Gog Magog Downs, just 5 miles from the centre of Cambridge.

Please note the [AccessArt registered office and all contact details remain as detailed here.](#)



Quay Mill Hotel & Spa, Cambridge

The Centre for Computing History

The Fitzwilliam Museum

Cambridge Central Mosque

Cambridge

GRANTCHESTER MEADOWS

CHERRY HINTON

Barton

Grantchester

RED CROSS

TRUMPINGTON

Wandlebury Country Park

Stapleford Granary Arts Centre & Cafe

Little Shelford

Harston

Slingsfield