

# Collage: Deconstructing, Reconstructing and Abstracting

By [Joe Gamble](#)

In this resource, learners will create an abstract artwork using collage and drawing, exploring memory and place through colour, composition and found materials. Using viewfinders, they will re-see and interpret a chosen prompt or source of inspiration.

Looking at and combining the work of [Etel Adnan](#), [Kurt Schwitters](#), [Lee Krasner](#) and [Atelier Bingo](#), learners will explore colour, texture and composition. With a focus on the process over the finished outcome, learners will also be encouraged to experiment and play, enjoying the freedom of using and responding to their intuition.

[Please log in](#) below as a member to access the full resource.



---

	<b>Please log in here to access full content.</b>
Username	<input type="text"/>
Password	<input type="password"/>
	<input type="button" value="Login"/> <input checked="" type="checkbox"/> Remember me
	<a href="#">Forgot Password</a>

**To access all content, I would like to join as...**

**An Individual**



**Creative practitioners, educators, teachers, parents, learners...**

**From £3.50**



## An Organisation...



Schools, Colleges, Arts Organisations: Single and Multi-Users  
From £42

***AccessArt is a UK Charity and we believe everyone has the right to be creative. AccessArt provides inspiration to help us all reach our creative potential.***

---

# What We Like About This Resource...

*“I really like how this playful resource helps us to make a creative response inspired by a stimulus, ensuring that the stimulus is only an entry point into an outcome that will look totally different. Exploring the themes of colour, texture and composition through the lens of different artists also helps us see how we can interpret (and re-interpret) colours and materials in a meaningful way. Viewfinders and collage are also great tools for those who experience ‘fear of the white page’ and will allow learners to make conscious creative decisions as they go.” – Tobi, AccessArt*

## You May Also Like

**Adapting AccessArt: Colour and Composition**



**Cut Paper Collage Still Life**



**Cooking with collage**



---

# **Session Recording: The Tiny Art School Movement: Spotlight**

---

# **Tiny Art Schools: The Little Makery**

---

# **Tiny Art Schools: Creative Days**

---

**Zoom Access Link: Artist Educator Spotlight**

---

**Zoom Access Link: AccessArt and International Schools**

---

**The AccessArt Lab: Workshop Sessions**

**<< [Back to AccessArt Lab](#)**

The AccessArt team will use the AccessArt Lab to devise, trial and develop content for the AccessArt website. [Explore the Areas of Focus and](#)



[Core Values of the AccessArt Lab here.](#)

As part of this process, we will be running in-person workshops at the studio at Stapleford Granary, Cambridgeshire.

These workshops sessions will evolve over our time at Stapleford and fall into two workshop types:

## Open sessions



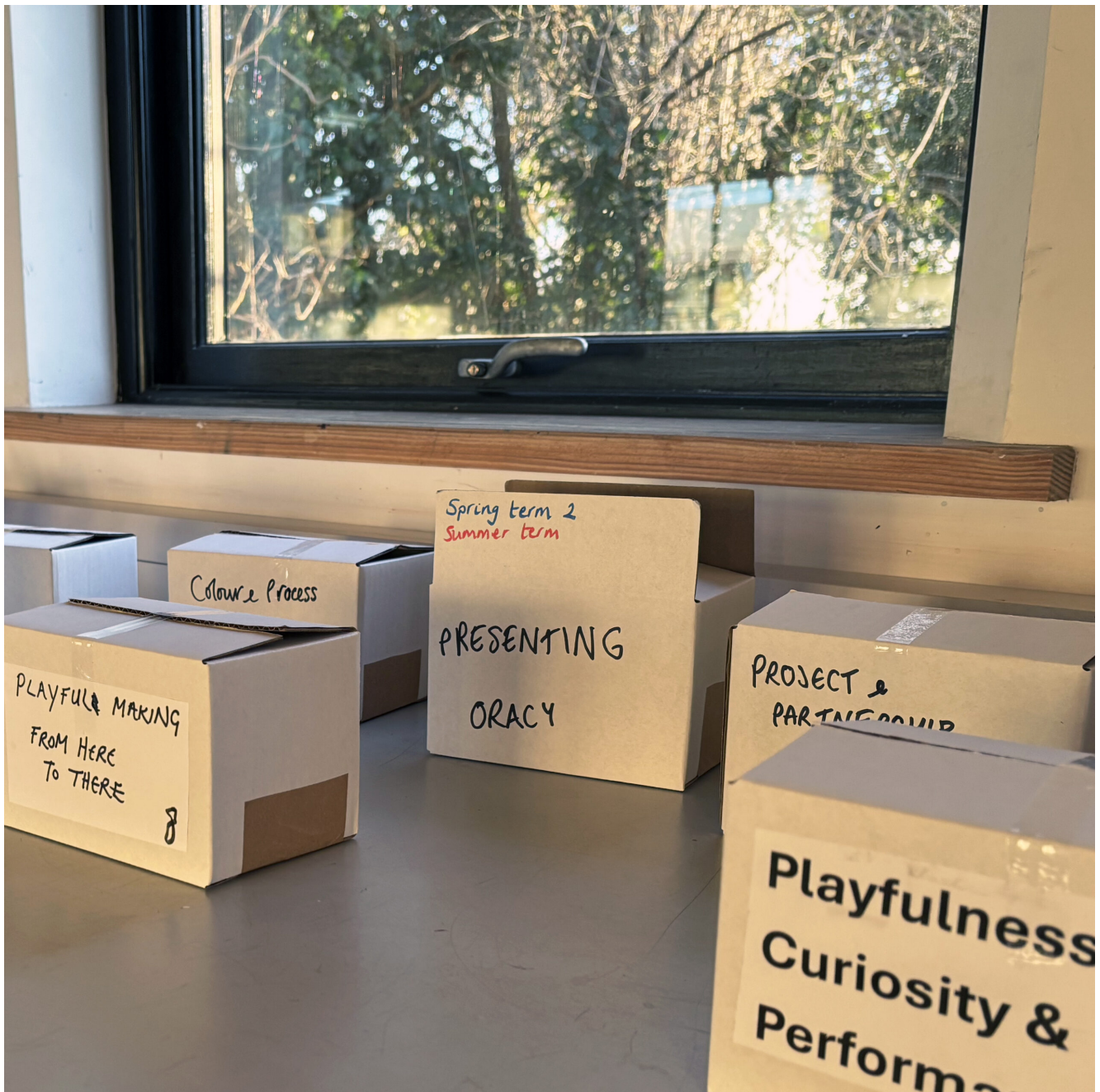


The Open [In-Person Sessions](#) will be open to various audiences. These sessions will be programmed over the following weeks and months.

To make sure you are kept up to date when we announce new in-person, open sessions, please:

- [Register for free at AccessArt](#) if you are not already a free subscriber or member
- [Join the AccessArt Network Facebook Group](#)
- [Follow us on Instagram](#)

**Invite-only sessions**



The Invite-Only Sessions will be open to selected experts in the field to help the AccessArt team brainstorm and better understand content and approach. This is an exciting opportunity for more experienced educators to join in and help contribute to stimulating thinking and discussion.

If you are an educator and would be interested in attending any in-person, invite-only sessions,

please read our “AccessArt Lab Areas of Focus & Core Values” post to make sure you understand the spirit and intention which will drive these sessions. If you would then like to be added to our register of interested educators list, please email [paula@accessart.org.uk](mailto:paula@accessart.org.uk) with the following information:

- Name and contact details
- Brief outline of educational areas of interest / experience, including audience/pupils.





Whilst the outcomes of the AccessArt Lab will be shared via AccessArt, Paula Briggs will also be sharing her own personal thoughts and observations about how we enable the creative process through nurturing a safe and exploratory space via [The Everyday School of Art](#) on Substack.

The AccessArt Lab will begin in January 2025. Please join the [AccessArt Network Facebook](#) group



and register at [AccessArt](#) for free to be kept in touch.

[Stapleford Granary](#) is an Arts Centre whose aim is to foster cultural understanding through education.

The venue offers music, art, education & conversation in a beautiful 19th century farm complex, situated at the foot of the Gog Magog Downs, just 5 miles from the centre of Cambridge.

---

*Please note the [AccessArt registered office and all contact details remain as detailed here.](#)*



## You May Also Like...

AccessArt Lab Areas of Focus & Core Values



**How tiny Art Schools grow**





# The AccessArt Lab Areas of Focus and Core Values

<< [Back to AccessArt Lab](#)

The AccessArt Lab provides AccessArt with the opportunity to focus on practical and pedagogical exploration of key areas of interest which have emerged over the last few years. The work in the AccessArt Lab will be guided by the areas of focus and core values described below.



[Find out about the in-person sessions](#) we will be running at the Lab to help facilitate these areas of focus.

## Areas of Focus



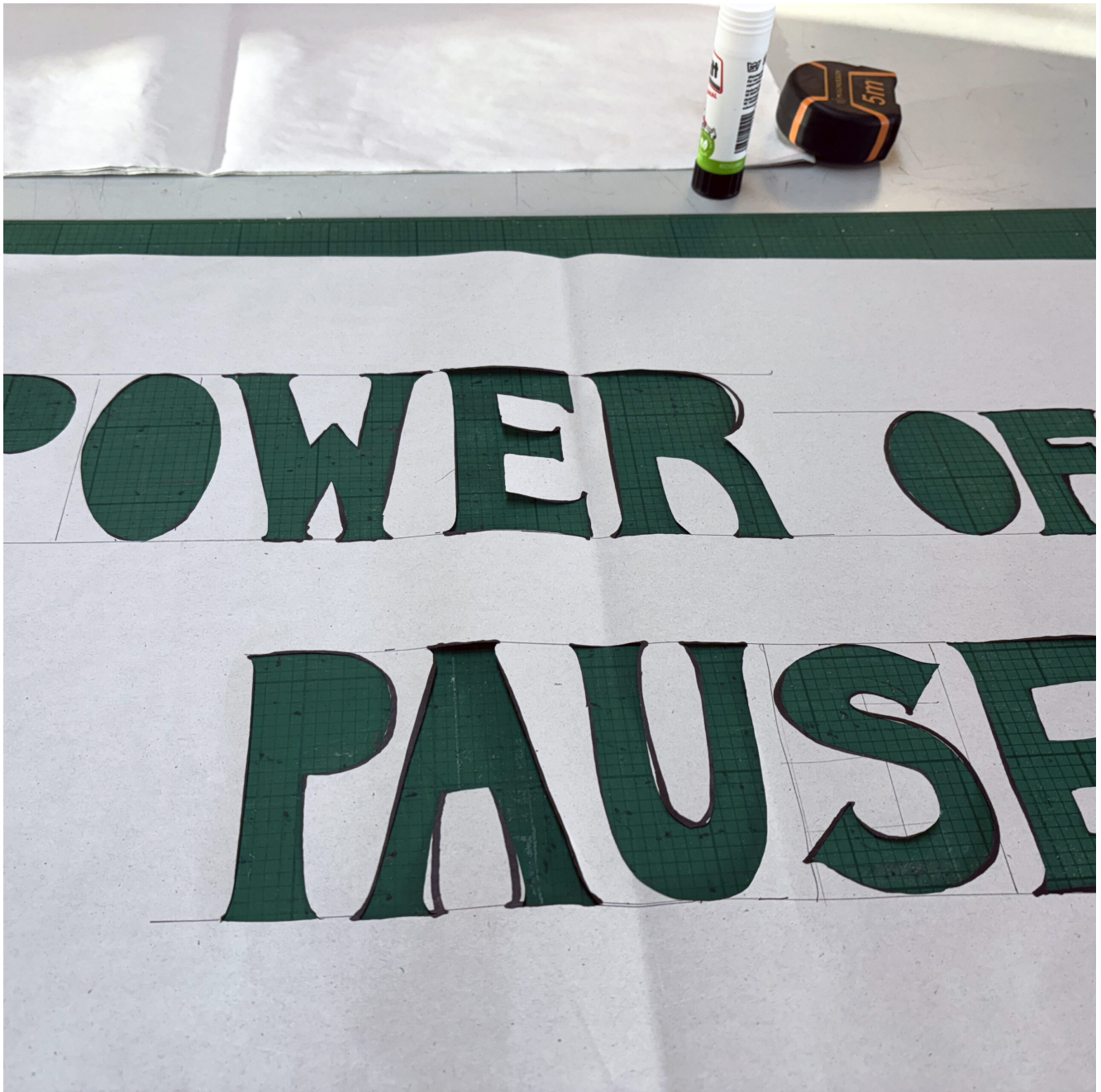
The AccessArt Lab will be exploring the following areas of focus. New areas will be allowed to evolve over time.

**Exploration of Inhabiting “Spaces of Not-Knowing” – What does it feel like to be in spaces of not-knowing? What are the risks and benefits? What might be the outcomes? How can we enable these spaces?**

- **Exploration of Social Models of Learning – How can we embrace shared experiences and outcomes to discover more open, inclusive and diverse ways of thinking and acting?**
- **Re-Connection to Physical Senses, Body-Based Activities and Exploration of Resistant Forces – Whilst not turning out back on digital, how can we better protect and appreciate time spent in the physical world? How can we build tolerance of what resistance feels like (in interaction with materials and ideas, and in communication between people), and how can we more positively manage our relationship to resistance?**
- **Teenage Enquiry-Based Learning – How can we devise a rich, diverse and adaptable curriculum to engage all teenagers?**

## **Core Values**

▪



The work undertaken in the Lab will be guided by the following principles:

- Awareness of the programming and messaging of our everyday lives and how this impacts upon our thought, action and wellbeing. Alongside this, an exploration of how we can explore a gentler, yet more physical way of thinking and acting, and the benefits this might



bring.

- Permission for “Pause” – in all forms – space to think, space to act without outcome, space to play...
- Appreciation of “question” over “answer” – Where do we put the emphasis and how does it change our experience?
- An understanding that exploration of all areas of focus within the lab ultimately benefit others (people, communities and society) through accessible sharing of practice and ideas.





Whilst the outcomes of the AccessArt Lab will be shared via AccessArt, Paula Briggs will also be sharing her own personal thoughts and observations about how we enable the creative process through nurturing a safe and exploratory space via [The Everyday School of Art](#) on Substack.

To make sure you are kept up to date with all the AccessArt Lab news, please:

- [Register for free at AccessArt](#) if you are not already a free subscriber or member
- [Join the AccessArt Network Facebook Group](#)
- [Follow us on Instagram](#)

The AccessArt Lab will begin in January 2025. Please join the [AccessArt Network Facebook](#) group and register at [AccessArt](#) for free to be kept in touch.

[Stapleford Granary](#) is an Arts Centre whose aim is to foster cultural understanding through education.

The venue offers music, art, education & conversation in a beautiful 19th century farm complex, situated at the foot of the Gog Magog Downs, just 5 miles from the centre of Cambridge.

---

*Please note the [AccessArt registered office and all contact details remain as detailed here.](#)*





## You May Also Like...

**AccessArt Lab Workshop Sessions**





**How tiny Art Schools grow**



---

# Tiny Art Schools: Art School Ilkley Part One

---

# Tiny Art Schools: Art School Ilkley Part Two

---

# **Tiny Art Schools: Art School Ilkley Part Three**

---

## **“When We Hold Art Education In Our Hands”**

Recording of a presentation delivered by Paula Briggs, CEO and Creative Director of AccessArt, at the All Party Parliamentary Group for Art, Craft & Design Education on 17th December 2024.

---

## **Session Recording: Improving Outcomes in Drawing**

---

**Zoom Access Link: Panel**



# Event: Spaces and Skills to Nurture Creative Thought & Action

---

**Zoom Access Link: The Tiny Art School Movement: Spotlight**

---

**The AccessArt Lab at Stapleford Granary**

[<< Back to AccessArt Lab](#)



AccessArt has always advocated for the role artists can play in creating dynamic, engaging and relevant art education experiences for the whole community. We have seen through the [AccessArt Primary Art Curriculum](#) how activities that were devised, trialled and tested in community settings, led by artists working with small groups, have then been very successfully transferred into more formal education settings. Artists bring to education an opening of what is possible, together with a depth of understanding and clarity of purpose. Artists help educators ask important and often challenging questions: What is the purpose of art education, and how can we best inspire and enable?

AccessArt has been at the forefront of this approach for 25 years, and we have helped thousands of schools, organisations and individual artist educators transform their practice. Our recently launched [Tiny Art School Movement](#) is helping to encourage artists to reflect upon their potential as educators and to work with local communities.

Now we are ready to open the first ever AccessArt Lab as part of our continuing commitment to push the boundaries of what is possible when artists and educators from all settings work together. Led by [Paula Briggs](#), Creative Director of AccessArt and the AccessArt Lab, the studio at Stapleford Granary, Cambridge, will provide a space for an

ongoing creative (and practical) conversation between AccessArt and our audience.

*“We are very excited about the potential of the AccessArt Lab. We’ll be using the space to devise and test new content, especially around the creation of resources for teenagers, and around how we nurture creative thinking for all. But over and above these key areas, we’ll be exploring (and celebrating) what it is like for learners to enjoy being in a space of “not knowing.” Too often, education focuses on the accumulation of precise and nameable knowledge, and then on measuring knowledge retention. Art provides a valuable alternative to this kind of thinking, providing opportunities to acknowledge there are other types of intelligence, and that there is real value in helping learners and teachers experience the benefits of operating in a space of play, feeling safe but inspired in the space of “not knowing... yet,” and empowered by personal discovery.*

*As a predominantly [digital organisation with a national and international reach](#), the AccessArt Lab will provide an opportunity for us to engage with audiences in new ways, and of course everything we learn and create in the Lab will be shared with all our audiences via the AccessArt website. We are excited to see how this develops into what we hope will be a vibrant and meaningful creative conversation,*

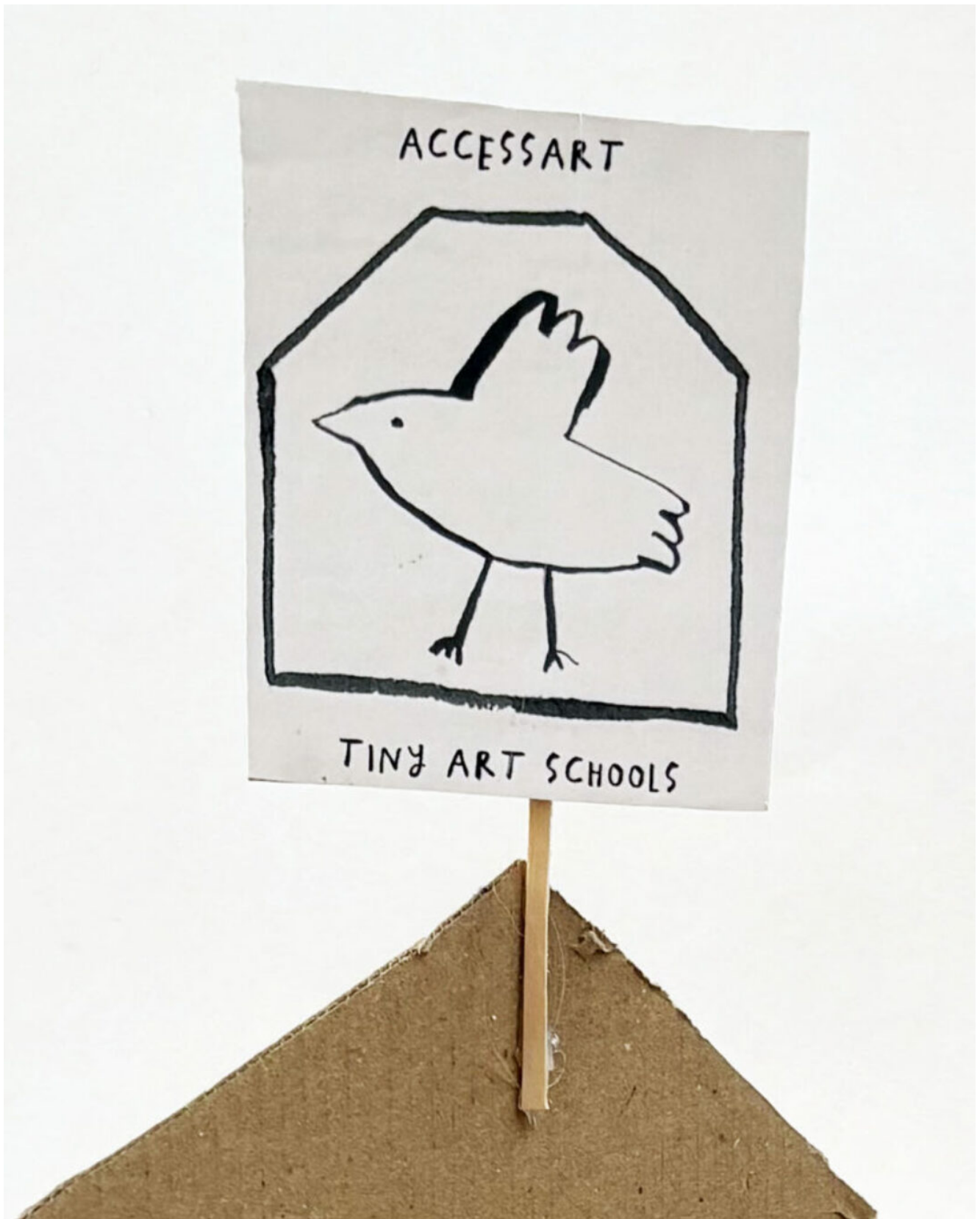


*helping our combined voice and expertise to be heard across all settings, and to help affect change."*



SPACE of UNKNOWING

*Staying in a space*



The AccessArt Lab will begin in January 2025. Please join the [AccessArt Network Facebook](#) group at and register at [AccessArt](#) for free to be kept



in touch.

[Stapleford Granary](#) is an Arts Centre whose aim is to foster cultural understanding through education.

The venue offers music, art, education & conversation in a beautiful 19th century farm complex, situated at the foot of the Gog Magog Downs, just 5 miles from the centre of Cambridge.

---

*Please note the [AccessArt registered office and all contact details remain as detailed here.](#)*

## You May Also Like...

AccessArt Lab Areas of Focus & Core Values



## **AccessArt Lab Workshop Sessions**



---

**Session Recording: Ten  
Minutes, Five Times a Week**



**with AccessArt and DRYAD  
Education**

---

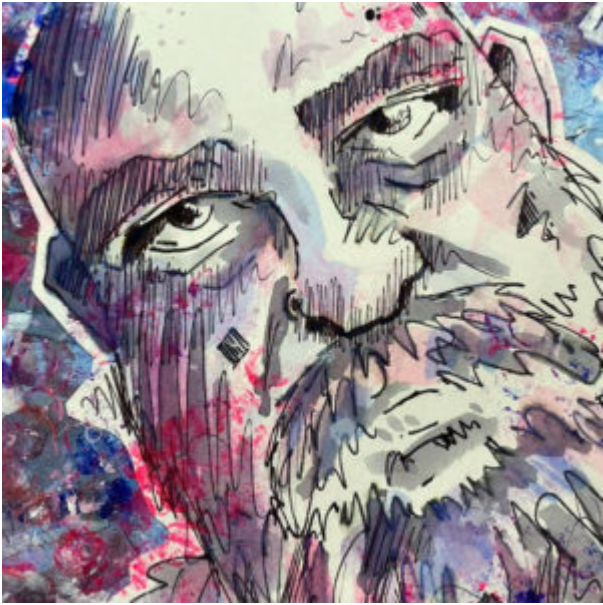
**“Everyone has the right to  
freedom of expression”**

---

**Adapting AccessArt: Stories  
and Faces**

**You May Also Like...**

**Making Physical or Digital Layered  
Portraits**



## **Pathway: Exploring Identity**



**Quentin Blake's Drawings as Inspiration:  
Exaggerating to communicate**



## Session Recording: Creating School Exhibitions & Displays



## Finger Palette Portraits





**elastic band sketchbook**



---

**Giant Jewellery: Multimedia  
Response to Yayoi Kusama**